

**HOLIDAY BOOKMARK**



**Design Count: 22w X 99h stitches**

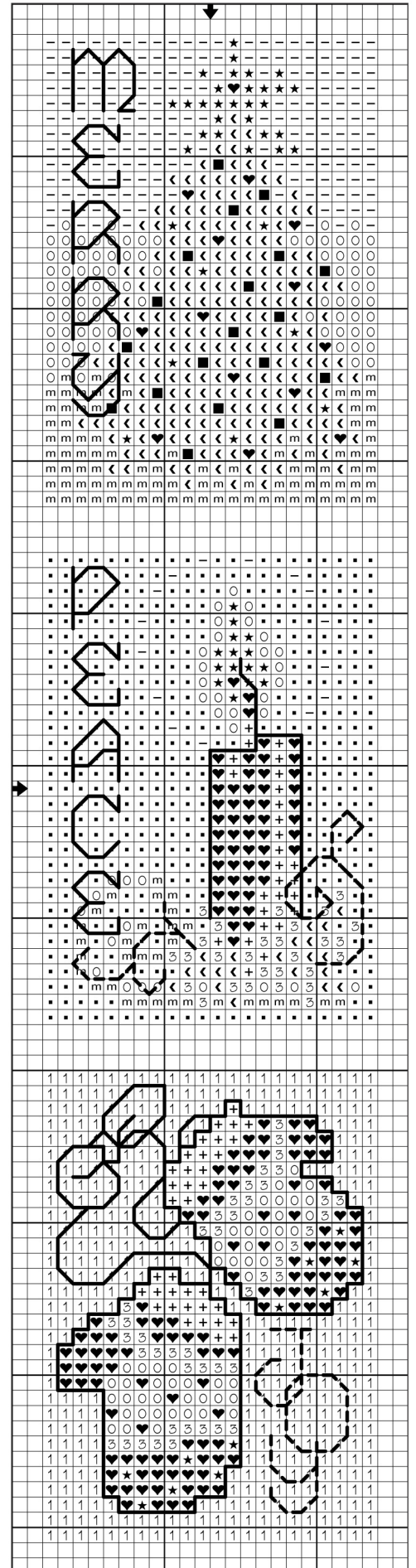
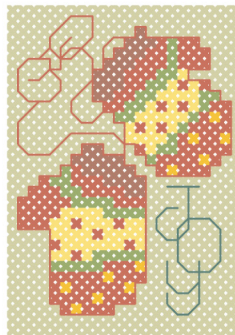
18-count - 1-1/8" w X 5-1/2" h

**Cross stitch – two ply**

	DMC	Color
♥	321	Christmas Red
◀	699	Christmas Green
○	726	Topaz-LT
▪	800	Delft Blue-Pale
+	815	Garnet-MD
⊜	906	Parrot Green-MD
★	972	Canary-DK
—	3078	Golden Yellow-VY LT
1	3348	Yellow Green-LT
m	3820	Straw-DK
■	3844	Bright Turquoise-DK

**Back stitch – one ply**

	DMC	Color
—	321	Christmas Red
---	699	Christmas Green



The Janlynn Corporation allows a photocopy / enlargement of this chart for personal use. Selling or distributing copies of this chart is strictly prohibited.

**The Janlynn Corporation**

2070 Westover Road, Chicopee, MA 01022 USA  
 800-445-5565 (USA & Canada) ~ 413-206-0002 (International)  
 www.janlynn.com ~ Email: customerserv@janlynn.com